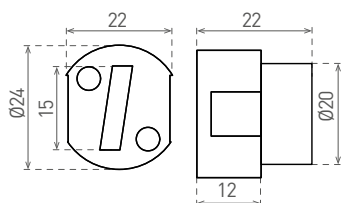
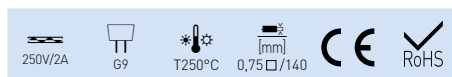
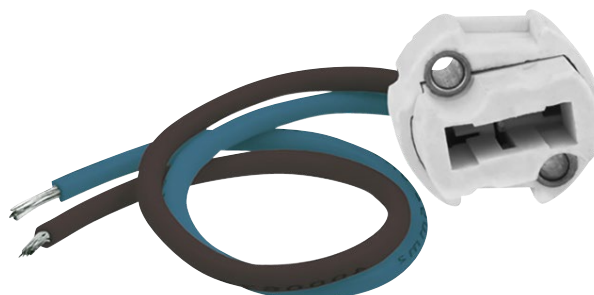


## LH-G9

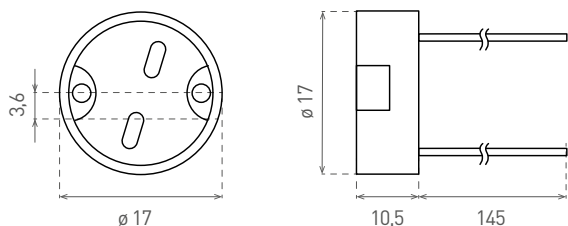


- KERAMICKÁ OBJÍMKA
- keramické telo
- výborná tepelná odolnosť
- pocínované medené vodiče
- izolácia zo silikónu

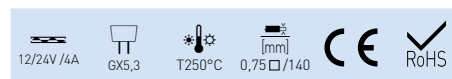


|       |         |               |    |        |        |
|-------|---------|---------------|----|--------|--------|
|       |         |               |    |        | DKC    |
| LH G9 | GXOS069 | 8592660105390 | 17 | 20/500 | 0,41 € |

## LH-GX5,3



- KERAMICKÁ OBJÍMKA
- keramické telo
- výborná tepelná odolnosť
- pocínované medené vodiče
- izolácia zo silikónu



|          |         |               |   |        |        |
|----------|---------|---------------|---|--------|--------|
|          |         |               |   |        | DKC    |
| LH-GX5,3 | GXOS045 | 8592660103310 | 8 | 10/500 | 0,26 € |